

# Typical Chess Combination Puzzles`

by Bohdan Vovk

## Part II

Typical Chess Combinations Covered:

1-10. See in Part I. Download it at [www.chesselo.com](http://www.chesselo.com)

11. Use the First (Last) Horizontal

12. Destroy the King Pawns to Checkmate

13. Sacrifice to Checkmate

14. The Diversion

15. The Pin

16. Block the Line

17. The False Sacrifice

18. The Break Through

19. The Zuzwang Idea

20. The Stalemate Idea



[www.chesselo.com](http://www.chesselo.com)

# Contents

Introduction .....	3
<b>The Examples and Puzzles .....</b>	<b>4-13</b>
<b>on the Following Typical Chess Combinations:</b>	
11. Use the First (Last) Horizontal .....	4
12. Destroy the King Pawns to Checkmate .....	5
13. Sacrifice to Checkmate .....	6
14. The Diversion .....	7
15. The Pin .....	8
16. Block the Line .....	9
17. The False Sacrifice .....	10
18. The Break Through .....	11
19. The Zuzwang Idea .....	12
20. The Stalemate Idea .....	13
<b>The Answers to the Puzzles .....</b>	<b>14-15</b>

# Introduction

Dear Fellow Chess Player,

Thank you for downloading “Typical Chess Combination Puzzles. Part II,” which includes the typical chess combinations 11-20. Each one is 1 example to learn and 2 puzzles to solve. You can also download Part I of this eBook at [www.chesselo.com](http://www.chesselo.com)...

Please remember that a chess combination is usually a forced variation with **a sacrifice, which leads to a positive result.** Because of the sacrifice, please always calculate all your moves before you begin a combination.

When studying the examples and solving the puzzles, please try to understand the main idea of each chess combination. With the answers, all the typical chess combinations 11-20 in Part II of this eBook are on the following topics:

11. Use the First (Last) Horizontal
12. Destroy the King Pawns to Checkmate
13. Sacrifice to Checkmate
14. The Diversion
15. The Pin
16. Block the Line
17. The False Sacrifice
18. The Break Through
19. The Zuzwang Idea
20. The Stalemate Idea

To Your Chess Success,

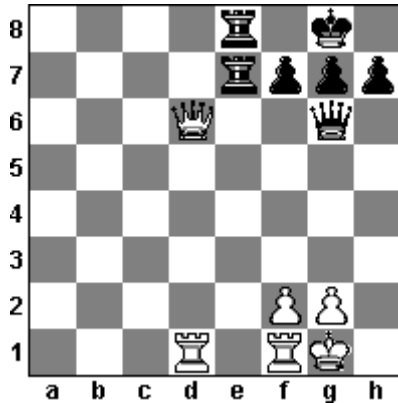
Bohdan Vovk

<http://www.chesselo.com>

<http://www.chesscalculatorprogram.com>

# 11. Use the First (Last) Horizontal to Checkmate

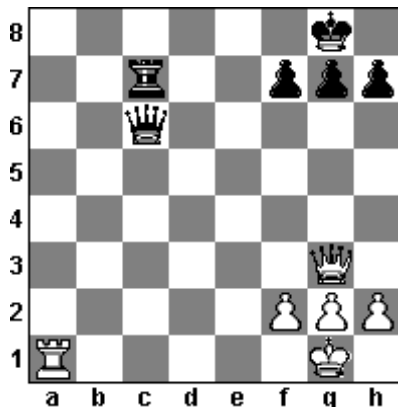
Diagram 28- **Example**. Diagrams 29, 30 – **Puzzles**.



## Diagram 28 – Example

Typical chess combination “Use the First (Last) Horizontal to Checkmate”

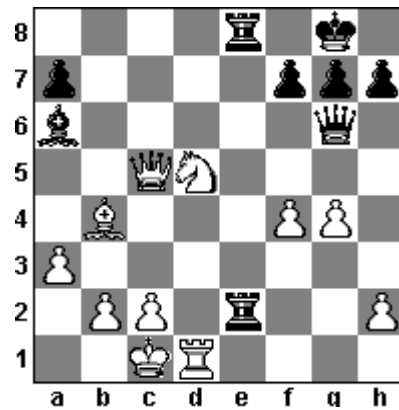
1. **Qxe7** { 1. ... **Rxe7** 2. **Rd8+** **Re8** 3. **Rxe8#** }



## Diagram 29 - Puzzle

Typical chess combination “Use the First (Last) Horizontal to Checkmate”

See solution on page 14



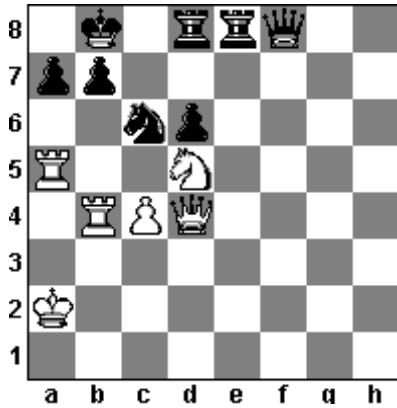
## Diagram 30 - Puzzle

Typical chess combination “Use the First (Last) Horizontal to Checkmate”

See solution on page 14

# 12. Destroy the King Pawns to Checkmate

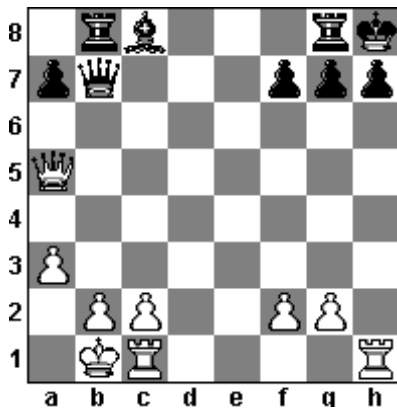
Diagram 31- **Example**. Diagrams 32, 33 – **Puzzles**.



## Diagram 31 – Example

Typical chess combination “Destroy the King Pawns to Checkmate”

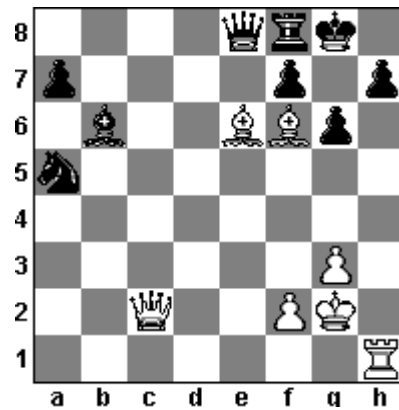
1. **Rxb7+** **Kxb7** 2. **Rxa7+** **Nxa7** 3. **Qb6+** **Kc8** 4. **Qc7#**



## Diagram 32 - Puzzle

Typical chess combination “Destroy the King Pawns to Checkmate”

See solution on page 14



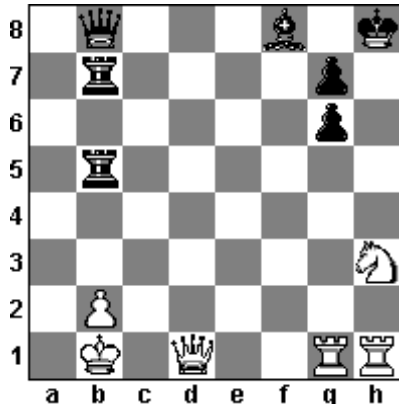
## Diagram 33 - Puzzle

Typical chess combination “Destroy the King Pawns to Checkmate”

See solution on page 14

# 13. Sacrifice to Checkmate

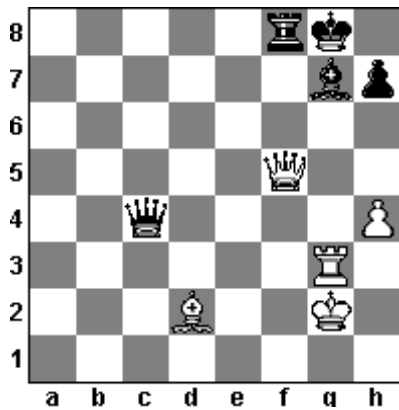
Diagram 34- **Example**. Diagrams 35, 36 – **Puzzles**.



## Diagram 34 – Example

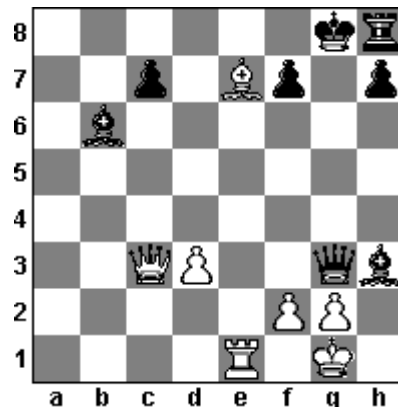
Typical chess combination “Sacrifice to Checkmate”

1. **Ng5+ Kg8** 2. **Rh8+ Kxh8** 3. **Rh1+ Kg8** 4. **Rh8+ Kxh8**  
 5. **Qh1+ Qh2** 6. **Qxh2+ Kg8** 7. **Qh7#**



## Diagram 35 - Puzzle

Typical chess combination “Sacrifice to Checkmate”  
 See solution on page 14

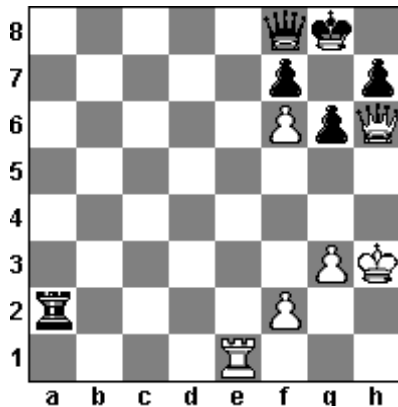


## Diagram 36 - Puzzle

See solution on page 14

# 14. The Diversion

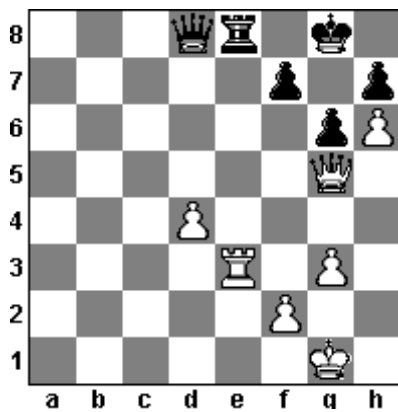
Diagram 37- **Example**. Diagrams 38, 39 – **Puzzles**.



## Diagram 37 – Example

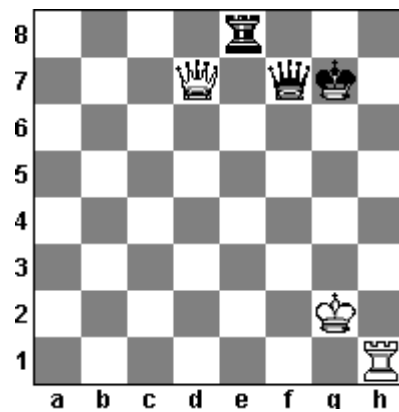
Typical chess combination “The Diversion”

1. **Re8** ~ 2. **Qg7#**



## Diagram 38 - Puzzle

Typical chess combination “The Diversion”  
See solution on page 14

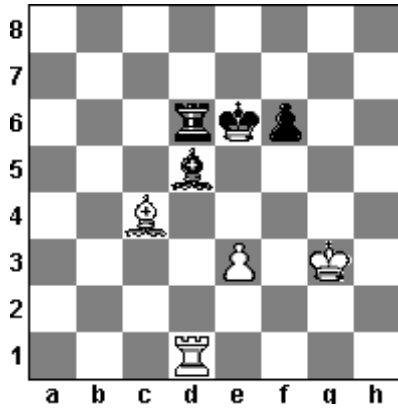


## Diagram 39 - Puzzle

See solution on page 14

# 15. The Pin

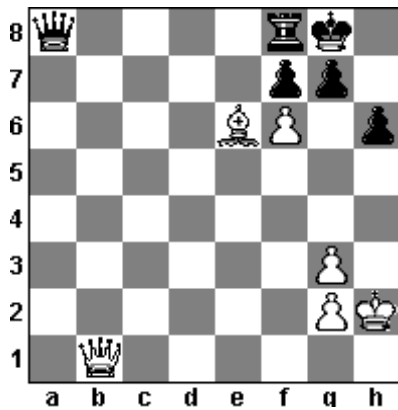
Diagram 40- **Example**. Diagrams 41, 42 – **Puzzles**.



## Diagram 40 – Example

Typical chess combination “The Pin”

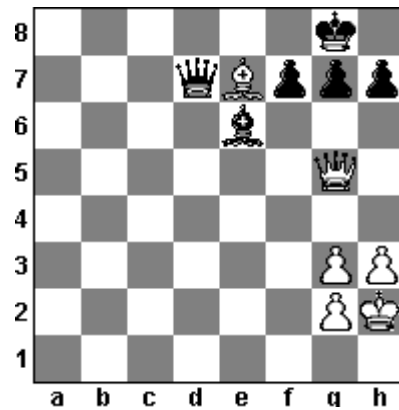
1. **Rxd5 Rxd5** 2. **e4 Kd6** 3. **Bxd5**



## Diagram 41 - Puzzle

Typical chess combination “The Pin”

See solution on page 14



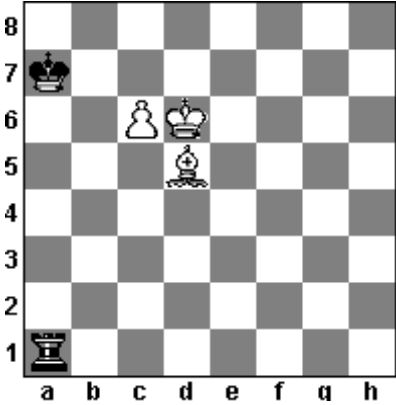
## Diagram 42 - Puzzle

See solution on page 14



# 16. Block the Line

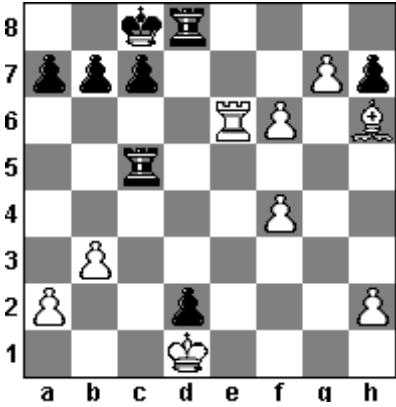
Diagram 43- **Example**. Diagrams 44, 45 – **Puzzles**.



## Diagram 43 – **Example**

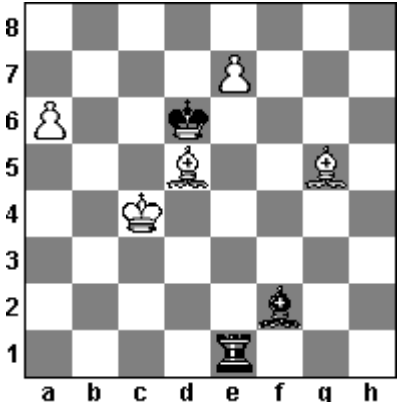
Typical chess combination “Block the Line”

1. **c7** **Rc1** 2. **Bc6**



## Diagram 44 - **Puzzle**

Typical chess combination “Block the Line”  
See solution on page 15

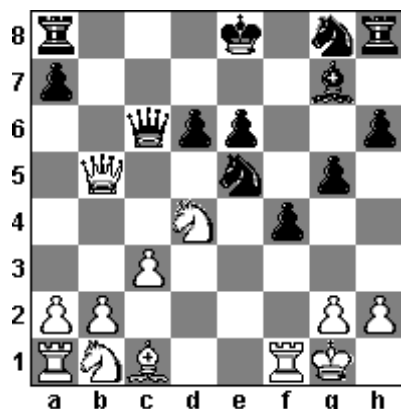


## Diagram 45 - **Puzzle**

See solution on page 15

# 17. The False Sacrifice

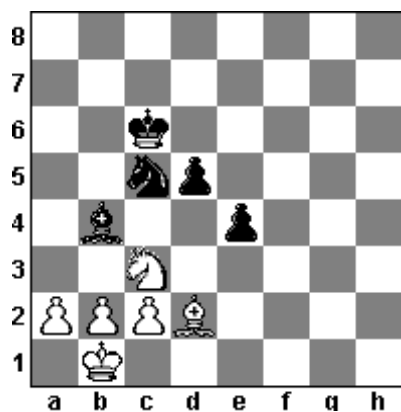
Diagram 46- **Example**. Diagrams 47, 48 – **Puzzles**.



## Diagram 46 – Example

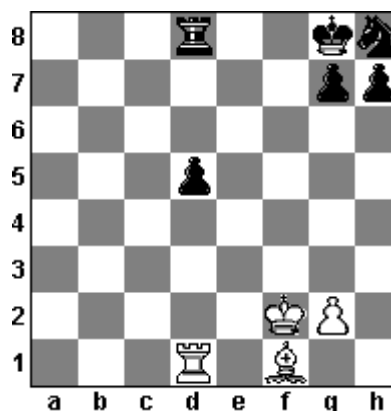
Typical chess combination “The False Sacrifice”

1. **Qxe5 Bxe5** 2. **Nxc6**



## Diagram 47 - Puzzle

Typical chess combination “The False Sacrifice”  
See solution on page 15

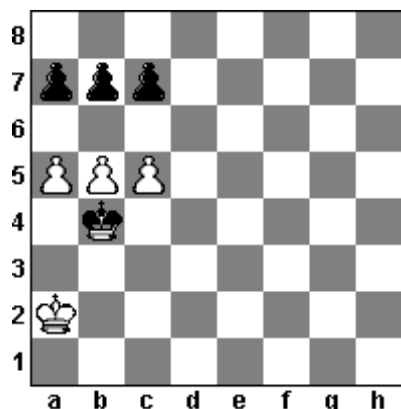


## Diagram 48 - Puzzle

See solution on page 15

# 18. The Break Through

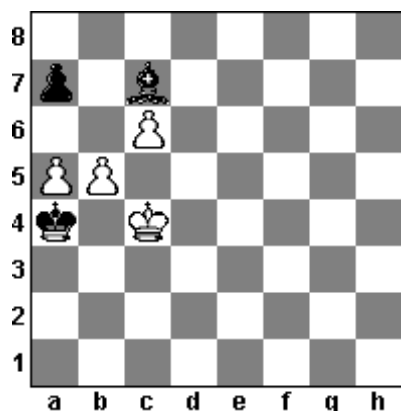
Diagram 49- **Example**. Diagrams 50, 51 – **Puzzles**.



## Diagram 49 – Example

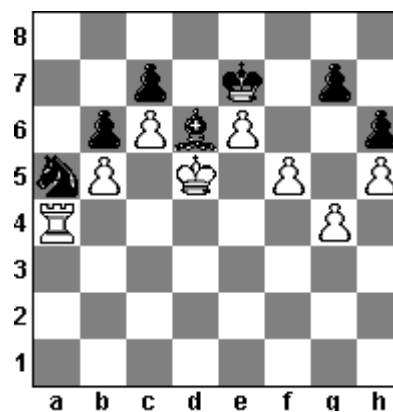
Typical chess combination “The Break Through”

1. **b6 ab** 2. **c6 bc** 3. **a6** { 1. ... **cb** 2. **a6 ba** 3. **c6** }



## Diagram 50 - Puzzle

Typical chess combination “The Break Through”  
See solution on page 15

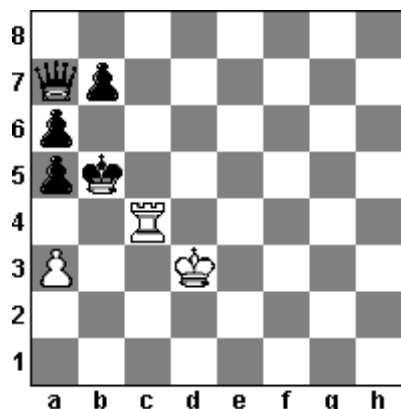


## Diagram 51 - Puzzle

See solution on page 15

# 19. The Zuzwang Idea

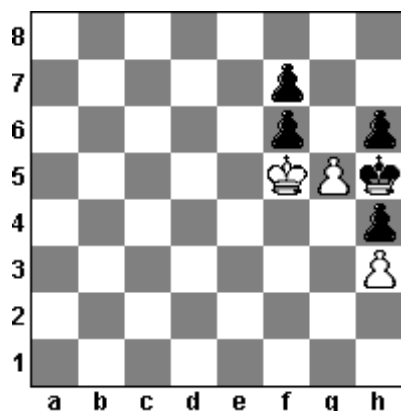
Diagram 52- **Example**. Diagrams 53, 54 – **Puzzles**.



## Diagram 52 – Example

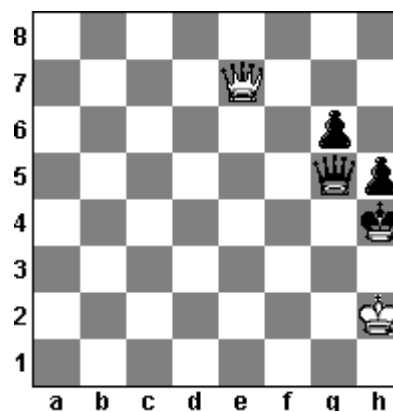
Typical chess combination “The Zuzwang Idea”

1. **a4+** **Kb6** 2. **Rc8** **Qa8** { The only move } 3. **Rxa8**



## Diagram 53 - Puzzle

Typical chess combination “The Zuzwang Idea”  
See solution on page 15

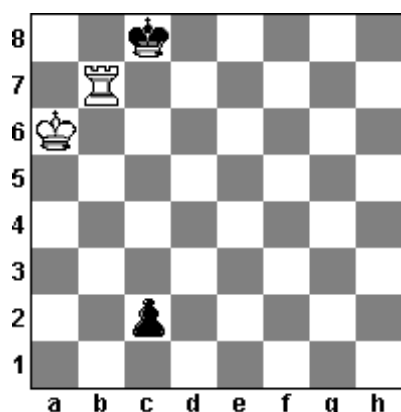


## Diagram 54 - Puzzle

See solution on page 15

## 20. The Stalemate Idea

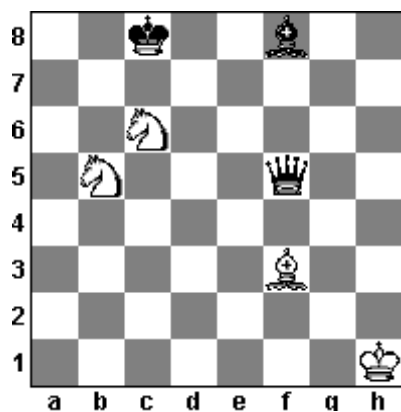
Diagram 55- **Example**. Diagrams 56, 57 – **Puzzles**.



### Diagram 55 – Example

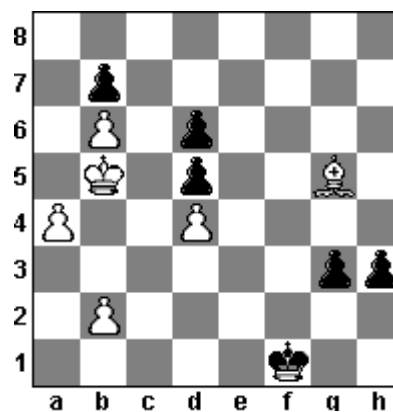
Typical chess combination “The Stalemate Idea”

1. **Rb5** **c1=Q** 2. **Rc5+** **Qxc5** { Draw by stalemate }



### Diagram 56 - Puzzle

Typical chess combination “The Stalemate Idea”  
See solution on page 15



### Diagram 57 - Puzzle

See solution on page 15

## The Answers to the Puzzles

### Use the First (Last) Horizontal

**Diagram 29** (on page 4)

1. **Qxc7** { 1. ... **Qxc7** 2. **Ra8+** **Qc8** 3. **Rxc8#** }

**Diagram 30** (on page 4)

1. **Ne7+** **R8xe7** 2. **Rd8+** **Re8** 3. **Qf8+** **Rxf8** 4. **Rxf8#**

### Destroy the King Pawns to Checkmate

**Diagram 32** (on page 5)

1. **Rxh7+** **Kxh7** 2. **Qh5#**

**Diagram 33** (on page 5)

1. **Qxg6+** **hg** 2. **Rh8#**

### Sacrifice to Checkmate

**Diagram 35** (on page 6)

1. **Rxg7+** **Kxg7** 2. **Bh6+** **Kxh6** { 2. ... **Kg8** **Qxf8#** } 3. **Qg5#**

**Diagram 36** (on page 6)

1. **Qxh8+** **Kxh8** 2. **Bf6+** **Kg8** { 2. ... **Qg7** } 3. **Re8#**

### The Diversion

**Diagram 38** (on page 7)

1. **Qf6** **Qxf6** 2. **Rxe8#**

**Diagram 39** (on page 7)

1. **Rh7+** **Kxh7** 2. **Qxf7+** **Kh6** 3. **Qxe8**

### The Pin

**Diagram 41** (on page 8)

1. **Qg6** ~ 2. **Qxg7#**

**Diagram 42** (on page 8)

1. **Cf6** **g6** 2. **Qh6** ~ 3. **Qg7#**

# The Answers to the Puzzles

## Block the Line

**Diagram 44** (on page 9)

1. **Rd6 Rxd6** 2. **g8=Q+ Rd8** 3. **Qxd8+ Kxd8** 4. **f7**  
 { 1. ... **cd** 2. **f7** }

**Diagram 45** (on page 9)

1. **Be3 Bxe3** 2. **e8=Q** { 1. ... **Rxe3** 2. **a7 Rxe7** 3. **a8=Q** }

## The False Sacrifice

**Diagram 47** (on page 10)

1. **Nxe4 Nxe4** 2. **Bxb4** { 1. ... **Bxd2 Nxd2** }

**Diagram 48** (on page 10)

1. **Rxd5 Rxd5** 2. **Bc4** { **But not** 1. **Cc4?? Rf8+** 2. **Ke3 dc** }

## The Break Through

**Diagram 50** (on page 11)

1. **b6 ab** 2. **a6 Bb8** 3. **a7 Bxa7** 4. **c7**

**Diagram 51** (on page 11)

1. **g5 hg** 2. **Rxa5 ba** 3. **b6 cb** 4. **f6+ gf** 5. **h6**

## The Zuzwang Idea

**Diagram 53** (on page 12)

1. **g6 fg+** 2. **Kxf6 g5** 3. **Kf5 g4** 4. **hg#**

**Diagram 54** (on page 12)

1. **Qe4+ Qg4** 2. **Qe3** { **Any Black move is a loosing one** }

## The Stalemate Idea

**Diagram 56** (on page 13)

1. **Ne7+ Bxe7** 2. **Nd6+ Bxd6** 3. **Bg4 Qxg4** { **Draw** }

**Diagram 57** (on page 13)

1. **Bd2 h2** 2. **Ba5 h1=Q** 3. **b4 ~** { **Draw** }